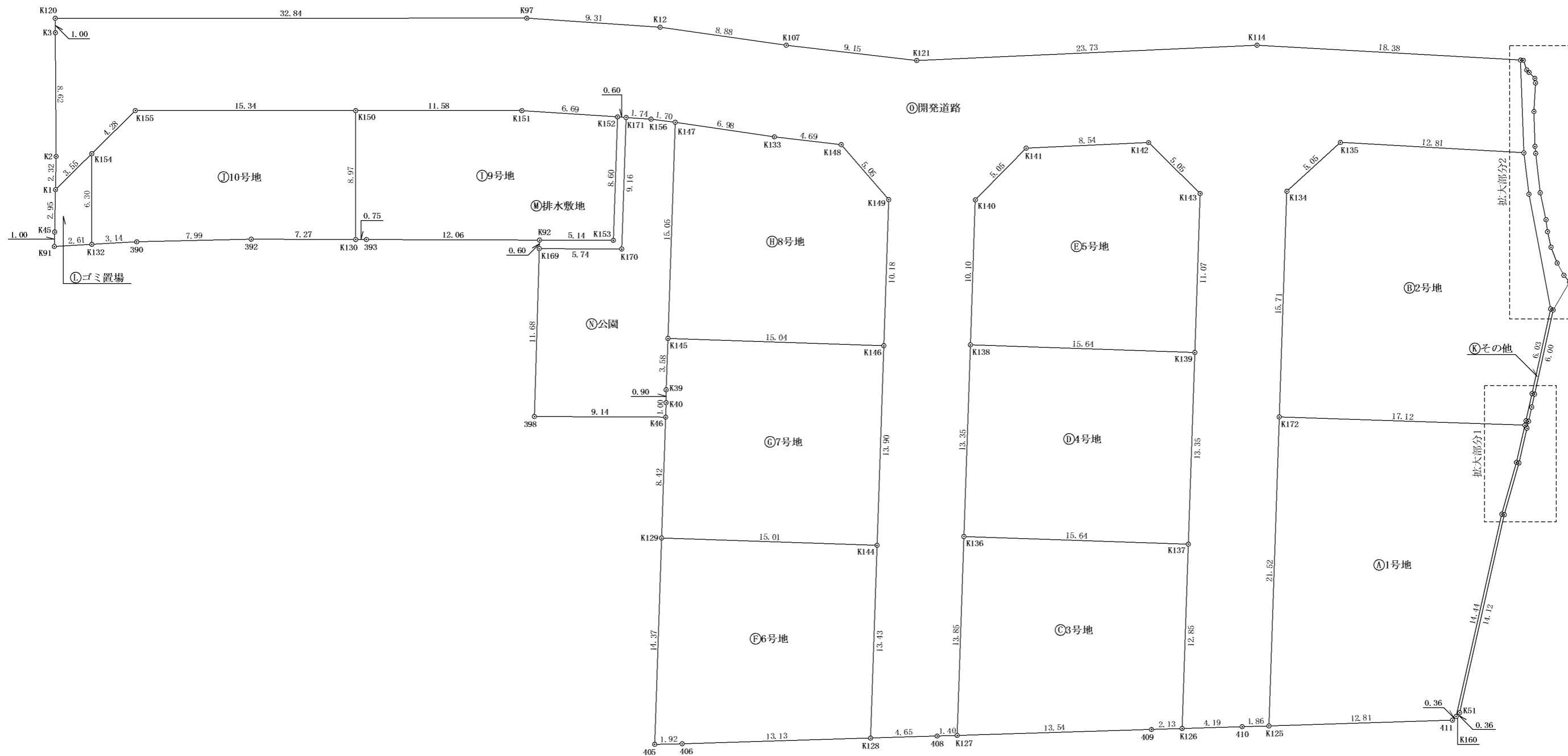
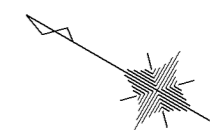
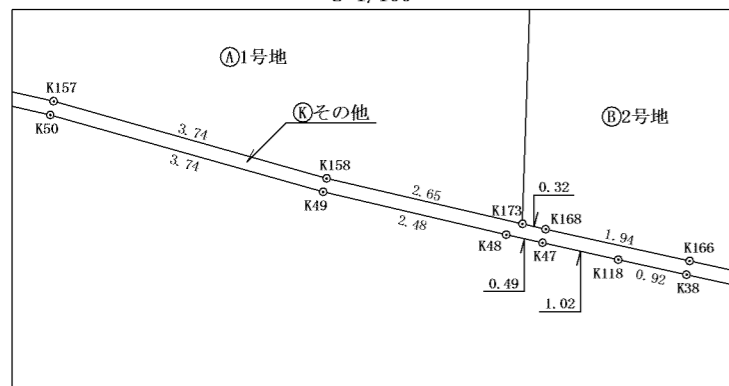


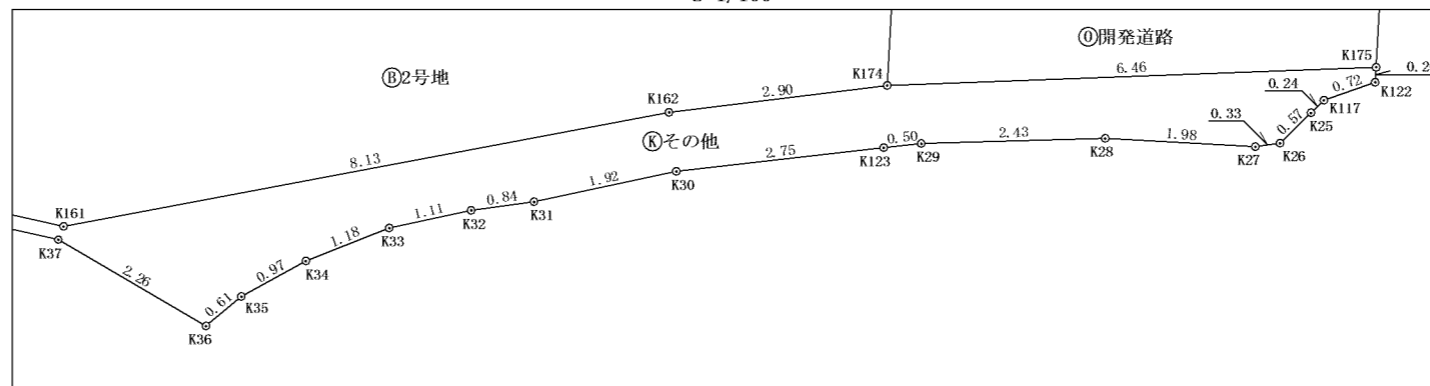
丈量図



拡大図1
S=1/100



拡大図2
S=1/100



| | | | |
|-----|---|------|-----|
| 図名 | 丈量図 | | |
| 所在 | 丸亀市土器町西一丁目 | | |
| 縮尺 | S=1/300 | 図面番号 | 1/3 |
| 作製日 | 令和4年7月8日 作製 | | |
| 作製者 | 丸亀市金倉町1432番地3 土地家屋調査士 富岡 計孝 TEL:0877-35-9600 FAX:0877-35-9605 | | |

座標求積表

| 地番 ㉠ 1号地 | | | | | |
|----------|----|------------|-----------|-----------------------|------|
| No. | 標識 | Xn | Yn | 辺長 | 点間No |
| K125 | | 141247.623 | 29554.293 | 12.81 | 411 |
| 411 | | 141236.738 | 29561.038 | 0.36 | K160 |
| K160 | | 141236.654 | 29561.388 | 14.44 | K157 |
| K157 | | 141240.946 | 29575.172 | 3.74 | K158 |
| K158 | | 141241.865 | 29578.801 | 2.65 | K173 |
| K173 | | 141242.639 | 29581.339 | 17.12 | K172 |
| K172 | | 141257.749 | 29573.282 | 21.52 | K125 |
| | | | 倍面積 | 630.402208 | |
| | | | 面積 | 315.201104 | |
| | | | 地積 | 315.20 m ² | |

| 地番 ㉡ 5号地 | | | | | |
|----------|----|------------|-----------|-----------------------|------|
| No. | 標識 | Xn | Yn | 辺長 | 点間No |
| K138 | | 141278.887 | 29566.867 | 15.64 | K139 |
| K139 | | 141265.087 | 29574.226 | 11.07 | K143 |
| K143 | | 141270.294 | 29583.992 | 5.05 | K142 |
| K142 | | 141275.179 | 29585.270 | 8.54 | K141 |
| K141 | | 141282.376 | 29580.669 | 5.05 | K140 |
| K140 | | 141283.639 | 29575.779 | 10.10 | K138 |
| | | | 倍面積 | 417.605611 | |
| | | | 面積 | 208.802806 | |
| | | | 地積 | 208.80 m ² | |

| 地番 ㉢ 9号地 | | | | | |
|----------|----|------------|-----------|-----------------------|------|
| No. | 標識 | Xn | Yn | 辺長 | 点間No |
| K130 | | 141319.642 | 29551.808 | 0.75 | 393 |
| 393 | | 141318.991 | 29552.181 | 12.06 | K92 |
| K92 | | 141308.523 | 29558.178 | 5.14 | K153 |
| K153 | | 141304.062 | 29560.734 | 8.60 | K152 |
| K152 | | 141308.108 | 29568.322 | 6.69 | K151 |
| K151 | | 141314.106 | 29565.369 | 11.58 | K150 |
| K150 | | 141324.130 | 29559.580 | 8.97 | K130 |
| | | | 倍面積 | 323.217343 | |
| | | | 面積 | 161.608672 | |
| | | | 地積 | 161.60 m ² | |

| 地番 ㉣ 2号地 | | | | | |
|----------|----|------------|-----------|-----------------------|------|
| No. | 標識 | Xn | Yn | 辺長 | 点間No |
| K172 | | 141257.749 | 29573.282 | 17.12 | K173 |
| K173 | | 141242.639 | 29581.339 | 0.32 | K168 |
| K168 | | 141242.731 | 29581.641 | 1.94 | K166 |
| K166 | | 141243.317 | 29583.495 | 6.03 | K161 |
| K161 | | 141245.134 | 29589.241 | 8.13 | K162 |
| K162 | | 141250.434 | 29595.409 | 2.90 | K174 |
| K174 | | 141252.182 | 29597.726 | 12.81 | K135 |
| K135 | | 141263.616 | 29591.959 | 5.05 | K134 |
| K134 | | 141265.142 | 29587.145 | 15.71 | K172 |
| | | | 倍面積 | 661.681021 | |
| | | | 面積 | 330.840511 | |
| | | | 地積 | 330.84 m ² | |

| 地番 ㉤ 6号地 | | | | | |
|----------|----|------------|-----------|-----------------------|------|
| No. | 標識 | Xn | Yn | 辺長 | 点間No |
| 405 | | 141284.030 | 29531.789 | 1.92 | 406 |
| 406 | | 141282.389 | 29532.780 | 13.13 | K128 |
| K128 | | 141271.226 | 29539.686 | 13.43 | K144 |
| K144 | | 141277.543 | 29551.532 | 15.01 | K129 |
| K129 | | 141290.791 | 29544.468 | 14.37 | 405 |
| | | | 倍面積 | 417.562842 | |
| | | | 面積 | 208.781421 | |
| | | | 地積 | 208.78 m ² | |

| 地番 ㉥ 10号地 | | | | | |
|-----------|----|------------|-----------|-----------------------|------|
| No. | 標識 | Xn | Yn | 辺長 | 点間No |
| K132 | | 141335.390 | 29542.324 | 3.14 | 390 |
| 390 | | 141332.766 | 29544.043 | 7.99 | 392 |
| 392 | | 141325.945 | 29548.195 | 7.27 | K130 |
| K130 | | 141319.642 | 29551.808 | 8.97 | K150 |
| K150 | | 141324.130 | 29559.580 | 15.34 | K155 |
| K155 | | 141337.415 | 29551.907 | 4.28 | K154 |
| K154 | | 141338.542 | 29547.783 | 6.30 | K132 |
| | | | 倍面積 | 323.246190 | |
| | | | 面積 | 161.623095 | |
| | | | 地積 | 161.62 m ² | |

| 地番 ㉦ 3号地 | | | | | |
|----------|----|------------|-----------|-----------------------|------|
| No. | 標識 | Xn | Yn | 辺長 | 点間No |
| K127 | | 141266.087 | 29542.864 | 13.54 | 409 |
| 409 | | 141254.572 | 29549.988 | 2.13 | K126 |
| K126 | | 141252.760 | 29551.111 | 12.85 | K137 |
| K137 | | 141258.805 | 29562.446 | 15.64 | K136 |
| K136 | | 141272.605 | 29555.087 | 13.85 | K127 |
| | | | 倍面積 | 417.580679 | |
| | | | 面積 | 208.790340 | |
| | | | 地積 | 208.79 m ² | |

| 地番 ㉧ 7号地 | | | | | |
|----------|----|------------|-----------|-----------------------|------|
| No. | 標識 | Xn | Yn | 辺長 | 点間No |
| K129 | | 141290.791 | 29544.468 | 15.01 | K144 |
| K144 | | 141277.543 | 29551.532 | 13.90 | K146 |
| K146 | | 141284.084 | 29563.798 | 15.04 | K145 |
| K145 | | 141297.355 | 29556.721 | 3.58 | K39 |
| K39 | | 141295.672 | 29553.566 | 0.90 | K40 |
| K40 | | 141295.225 | 29552.783 | 1.00 | K46 |
| K46 | | 141294.754 | 29551.900 | 8.42 | K129 |
| | | | 倍面積 | 417.610078 | |
| | | | 面積 | 208.805039 | |
| | | | 地積 | 208.80 m ² | |

| 地番 ㉨ 4号地 | | | | | |
|----------|----|------------|-----------|-----------------------|------|
| No. | 標識 | Xn | Yn | 辺長 | 点間No |
| K136 | | 141272.605 | 29555.087 | 15.64 | K137 |
| K137 | | 141258.805 | 29562.446 | 13.35 | K139 |
| K139 | | 141265.087 | 29574.226 | 15.64 | K138 |
| K138 | | 141278.887 | 29566.867 | 13.35 | K136 |
| | | | 倍面積 | 417.586476 | |
| | | | 面積 | 208.793238 | |
| | | | 地積 | 208.79 m ² | |

| 地番 ㉩ 8号地 | | | | | |
|----------|----|------------|-----------|-----------------------|------|
| No. | 標識 | Xn | Yn | 辺長 | 点間No |
| K145 | | 141297.355 | 29556.721 | 15.04 | K146 |
| K146 | | 141284.084 | 29563.798 | 10.18 | K149 |
| K149 | | 141288.874 | 29572.780 | 5.05 | K148 |
| K148 | | 141293.645 | 29574.436 | 4.69 | K133 |
| K133 | | 141297.954 | 29572.582 | 6.98 | K147 |
| K147 | | 141304.438 | 29570.005 | 15.05 | K145 |
| | | | 倍面積 | 417.602919 | |
| | | | 面積 | 208.801460 | |
| | | | 地積 | 208.80 m ² | |

| | | | |
|-----|---|-----|--|
| 図名 | 座標求積表 | | |
| 所在 | 丸亀市土器町西一丁目 | | |
| 縮尺 | 図面番号 | 2/3 | |
| 作製日 | 令和4年7月8日 作製 | | |
| 作製者 | 丸亀市金倉町1432番地3 土地家屋調査士 富岡 計孝 TEL:0877-35-9600 FAX:0877-35-9605 | | |

座標求積表

| 地番 ㊟ その他 | | | | | |
|----------|----|------------|-----------|-------|----------------------|
| No. | 標識 | Xn | Yn | 辺長 | 点間No |
| K161 | | 141245.134 | 29589.241 | 6.03 | K166 |
| K166 | | 141243.317 | 29583.495 | 1.94 | K168 |
| K168 | | 141242.731 | 29581.641 | 0.32 | K173 |
| K173 | | 141242.639 | 29581.339 | 2.65 | K158 |
| K158 | | 141241.865 | 29578.801 | 3.74 | K157 |
| K157 | | 141240.946 | 29575.172 | 14.44 | K160 |
| K160 | | 141236.654 | 29561.388 | 0.36 | K51 |
| K51 | | 141236.569 | 29561.739 | 14.12 | K50 |
| K50 | | 141240.767 | 29575.222 | 3.74 | K49 |
| K49 | | 141241.687 | 29578.851 | 2.48 | K48 |
| K48 | | 141242.406 | 29581.228 | 0.49 | K47 |
| K47 | | 141242.554 | 29581.696 | 1.02 | K118 |
| K118 | | 141242.863 | 29582.672 | 0.92 | K38 |
| K38 | | 141243.141 | 29583.551 | 6.00 | K37 |
| K37 | | 141244.949 | 29589.269 | 2.26 | K36 |
| K36 | | 141244.935 | 29591.526 | 0.61 | K35 |
| K35 | | 141245.506 | 29591.737 | 0.97 | K34 |
| K34 | | 141246.338 | 29592.240 | 1.18 | K33 |
| K33 | | 141247.266 | 29592.974 | 1.11 | K32 |
| K32 | | 141248.009 | 29593.794 | 0.84 | K31 |
| K31 | | 141248.520 | 29594.457 | 1.92 | K30 |
| K30 | | 141249.808 | 29595.883 | 2.75 | K123 |
| K123 | | 141251.446 | 29598.097 | 0.50 | K29 |
| K29 | | 141251.743 | 29598.499 | 2.43 | K28 |
| K28 | | 141253.016 | 29600.568 | 1.98 | K27 |
| K27 | | 141253.912 | 29602.339 | 0.33 | K26 |
| K26 | | 141254.114 | 29602.598 | 0.57 | K25 |
| K25 | | 141254.666 | 29602.752 | 0.24 | K117 |
| K117 | | 141254.894 | 29602.816 | 0.72 | K122 |
| K122 | | 141255.439 | 29603.285 | 0.20 | K175 |
| K175 | | 141255.618 | 29603.194 | 6.46 | K174 |
| K174 | | 141252.182 | 29597.726 | 2.90 | K162 |
| K162 | | 141250.434 | 29595.409 | 8.13 | K161 |
| | | | | 倍面積 | 40.547410 |
| | | | | 面積 | 20.273705 |
| | | | | 地積 | 20.27 m ² |

| 地番 ㊟ ゴミ置場 | | | | | |
|-----------|----|------------|-----------|------|----------------------|
| No. | 標識 | Xn | Yn | 辺長 | 点間No |
| K91 | | 141337.575 | 29540.894 | 2.61 | K132 |
| K132 | | 141335.390 | 29542.324 | 6.30 | K154 |
| K154 | | 141338.542 | 29547.783 | 3.55 | K1 |
| K1 | | 141339.479 | 29544.357 | 2.95 | K45 |
| K45 | | 141338.055 | 29541.776 | 1.00 | K91 |
| | | | | 倍面積 | 26.186122 |
| | | | | 面積 | 13.093061 |
| | | | | 地積 | 13.09 m ² |

| 地番 ㊟ 排水敷地 | | | | | |
|-----------|----|------------|-----------|------|---------------------|
| No. | 標識 | Xn | Yn | 辺長 | 点間No |
| K169 | | 141308.238 | 29557.650 | 5.74 | K170 |
| K170 | | 141303.258 | 29560.503 | 9.16 | K171 |
| K171 | | 141307.569 | 29568.586 | 0.60 | K152 |
| K152 | | 141308.108 | 29568.322 | 8.60 | K153 |
| K153 | | 141304.062 | 29560.734 | 5.14 | K92 |
| K92 | | 141308.523 | 29558.178 | 0.60 | K169 |
| | | | | 倍面積 | 17.189027 |
| | | | | 面積 | 8.594514 |
| | | | | 地積 | 8.59 m ² |

| 地番 ㊟ 公園 | | | | | |
|---------|----|------------|-----------|-------|-----------------------|
| No. | 標識 | Xn | Yn | 辺長 | 点間No |
| 398 | | 141302.694 | 29547.368 | 9.14 | K46 |
| K46 | | 141294.754 | 29551.900 | 1.00 | K40 |
| K40 | | 141295.225 | 29552.783 | 0.90 | K39 |
| K39 | | 141295.672 | 29553.566 | 3.58 | K145 |
| K145 | | 141297.355 | 29556.721 | 15.05 | K147 |
| K147 | | 141304.438 | 29570.005 | 1.70 | K156 |
| K156 | | 141306.009 | 29569.352 | 1.74 | K171 |
| K171 | | 141307.569 | 29568.586 | 9.16 | K170 |
| K170 | | 141303.258 | 29560.503 | 5.74 | K169 |
| K169 | | 141308.238 | 29557.650 | 11.68 | 398 |
| | | | | 倍面積 | 275.661651 |
| | | | | 面積 | 137.830826 |
| | | | | 地積 | 137.83 m ² |

| 地番 ㊟ 開発道路 | | | | | |
|-----------|----|------------|-----------|-------|------------------------|
| No. | 標識 | Xn | Yn | 辺長 | 点間No |
| K2 | | 141340.599 | 29546.386 | 2.32 | K1 |
| K1 | | 141339.479 | 29544.357 | 3.55 | K154 |
| K154 | | 141338.542 | 29547.783 | 4.28 | K155 |
| K155 | | 141337.415 | 29551.907 | 15.34 | K150 |
| K150 | | 141324.130 | 29559.580 | 11.58 | K151 |
| K151 | | 141314.106 | 29565.369 | 6.69 | K152 |
| K152 | | 141308.108 | 29568.322 | 0.60 | K171 |
| K171 | | 141307.569 | 29568.586 | 1.74 | K156 |
| K156 | | 141306.009 | 29569.352 | 1.70 | K147 |
| K147 | | 141304.438 | 29570.005 | 6.98 | K133 |
| K133 | | 141297.954 | 29572.582 | 4.69 | K148 |
| K148 | | 141293.645 | 29574.436 | 5.05 | K149 |
| K149 | | 141288.874 | 29572.780 | 10.18 | K146 |
| K146 | | 141284.084 | 29563.798 | 13.90 | K144 |
| K144 | | 141277.543 | 29551.532 | 13.43 | K128 |
| K128 | | 141271.226 | 29539.686 | 4.65 | 408 |
| 408 | | 141267.275 | 29542.130 | 1.40 | K127 |
| K127 | | 141266.087 | 29542.864 | 13.85 | K136 |
| K136 | | 141272.605 | 29555.087 | 13.35 | K138 |
| K138 | | 141278.887 | 29566.867 | 10.10 | K140 |
| K140 | | 141283.639 | 29575.779 | 5.05 | K141 |
| K141 | | 141282.376 | 29580.669 | 8.54 | K142 |
| K142 | | 141275.179 | 29585.270 | 5.05 | K143 |
| K143 | | 141270.294 | 29583.992 | 11.07 | K139 |
| K139 | | 141265.087 | 29574.226 | 13.35 | K137 |
| K137 | | 141258.805 | 29562.446 | 12.85 | K126 |
| K126 | | 141252.760 | 29551.111 | 4.19 | 410 |
| 410 | | 141249.200 | 29553.316 | 1.86 | K125 |
| K125 | | 141247.623 | 29554.293 | 21.52 | K172 |
| K172 | | 141257.749 | 29573.282 | 15.71 | K134 |
| K134 | | 141265.142 | 29587.145 | 5.05 | K135 |
| K135 | | 141263.616 | 29591.959 | 12.81 | K174 |
| K174 | | 141252.182 | 29597.726 | 6.46 | K175 |
| K175 | | 141255.618 | 29603.194 | 18.38 | K114 |
| K114 | | 141272.028 | 29594.917 | 23.73 | K121 |
| K121 | | 141292.019 | 29582.136 | 9.15 | K107 |
| K107 | | 141300.422 | 29578.519 | 8.88 | K12 |
| K12 | | 141308.662 | 29575.212 | 9.31 | K97 |
| K97 | | 141317.020 | 29571.112 | 32.84 | K120 |
| K120 | | 141345.461 | 29554.686 | 1.00 | K3 |
| K3 | | 141344.956 | 29553.822 | 8.62 | K2 |
| | | | | 倍面積 | 2382.893444 |
| | | | | 面積 | 1191.446722 |
| | | | | 地積 | 1191.44 m ² |

合計 3593.24 m²

| | | | |
|-----|---|-----|--|
| 図名 | 座標求積表 | | |
| 所在 | 丸亀市土器町西一丁目 | | |
| 縮尺 | 図面番号 | 3/3 | |
| 作製日 | 令和4年7月8日 作製 | | |
| 作製者 | 丸亀市金倉町1432番地3 土地家屋調査士 富岡 計孝 TEL:0877-35-9600 FAX:0877-35-9605 | | |